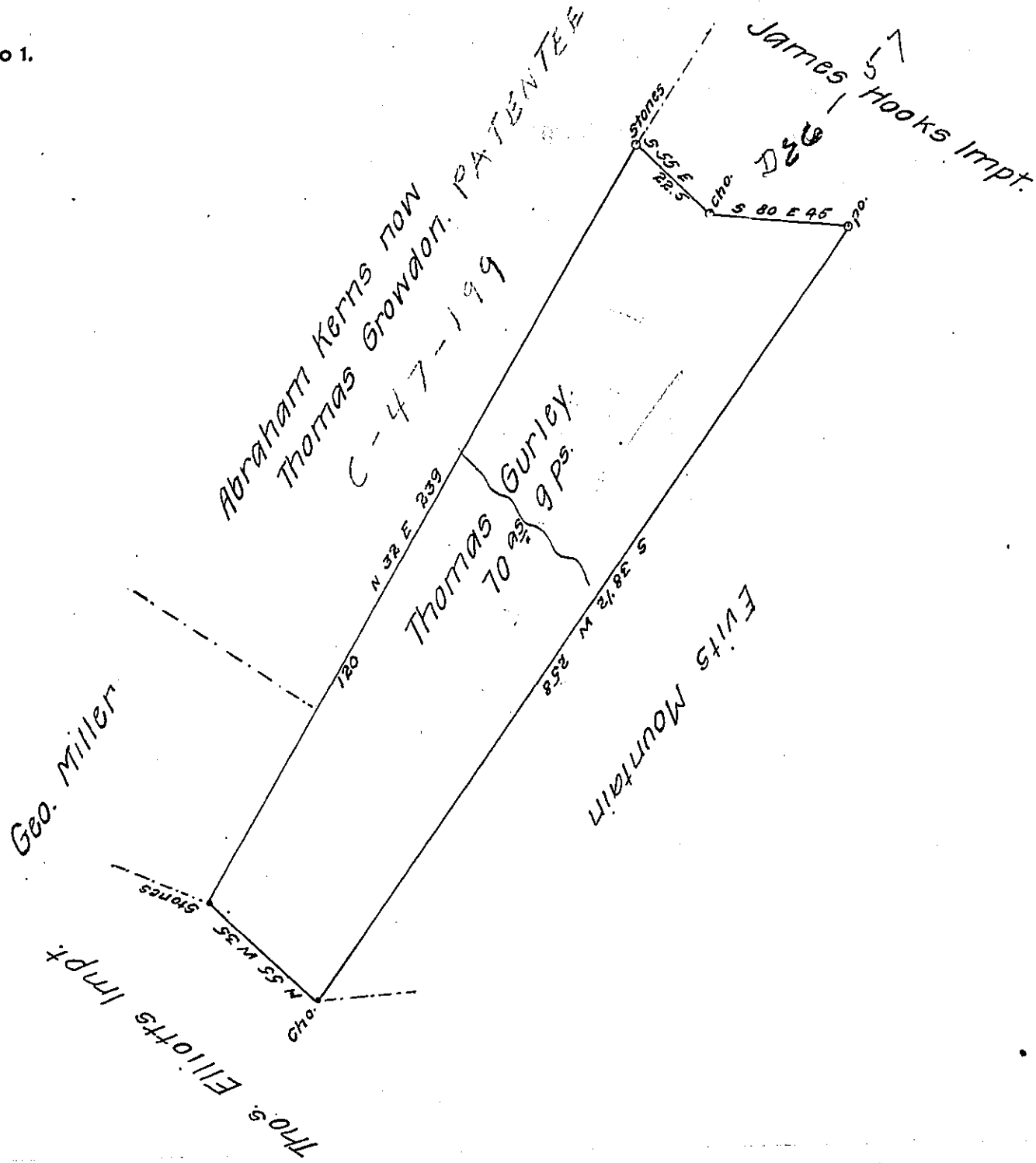


FORM No 1.



A Draft of a tract of land Situate in Cumberland Valley Township Bedford County Containing 70 as 9 perches, and the usual allowance of six per cent for roads &c. Surveyed the 8 day of July A.D. 1862. In pursuance of a warrant granted to Thomas Gurley dated the 22^d day of May A.D. 1862.

Sam^l Ketterman C.S.

To Henry Souther Esqr.

S. G.

IN TESTIMONY that the above is a copy of the original remaining on file in the Department of Internal Affairs of Pennsylvania, made conformably to an Act of Assembly approved the 16th day of February, 1833, I have hereunto set my Hand and caused the Seal of said Department to be affixed at Harrisburg, this nineteenth day of September 1907.

Henry Houch

Secretary of Internal Affairs.